


Cloud-Native AI-Driven Enterprise Automation for Scalable Digital Process Transformation in Multi-Industry Ecosystems

Sudheekar Reddy Pothireddy ^{a,*}

^aSenior Architect - AI & Digital Transformation, Safety and Efficacy IT Solutions, Inc, Austin, Texas 78665, USA.

Abstract

The rapid digital transformation of enterprise ecosystems has increased the demand for scalable, adaptive, and governance-aware automation frameworks capable of supporting heterogeneous operational environments across healthcare, finance, oil and gas, cloud services, and public-sector infrastructures. Conventional enterprise automation systems primarily rely on static rule-based workflow execution mechanisms that exhibit limited adaptability under dynamic workload conditions, evolving compliance constraints, and distributed cloud-resource environments. This paper proposes an AI-driven enterprise automation framework for scalable digital process transformation in multi-industry ecosystems. The proposed framework integrates intelligent workflow orchestration, adaptive AI agents, governance-aware compliance validation, cloud-native resource optimization, process mining, and enterprise analytics within a unified operational architecture. A mathematical formulation is developed to represent workflow orchestration, enterprise utility optimization, compliance satisfaction, orchestration confidence, and cloud-resource scalability. The framework is experimentally evaluated using heterogeneous enterprise workflow datasets, including the BPI Challenge 2017 event logs, Helpdesk workflow traces, Google cluster workload telemetry, and derived robotic process automation execution traces. Experimental results demonstrate substantial improvements over conventional automation approaches, including a 58.64% reduction in workflow latency, a 110.57% increase in operational throughput, a 30.27% improvement in cloud-resource utilization efficiency, and a 77.31% reduction in workflow interruption probability. Governance-aware validation further improved compliance satisfaction across HIPAA, ADA, Section 508, and audit-consistency domains. The results confirm that the proposed framework provides an effective foundation for intelligent, scalable, and resilient enterprise automation in next-generation digital transformation ecosystems.

Keywords: Artificial intelligence, enterprise automation, cloud-native systems, enterprise analytics, digital transformation, workflow optimization, enterprise scalability.

Article information:

DOI: <https://doi.org/10.71426/jasm.v1.i1.pp60-74>

Received: 6 Nov. 2025 | Revised: 20 Dec. 2025 | Accepted: 26 Dec. 2025 | Published: 31 Dec. 2025

Copyright ©2025 Author(s) et al.

This is an open-access article distributed under the Attribution-NonCommercial 4.0 International (CC BY-NC 4.0)

1. Introduction

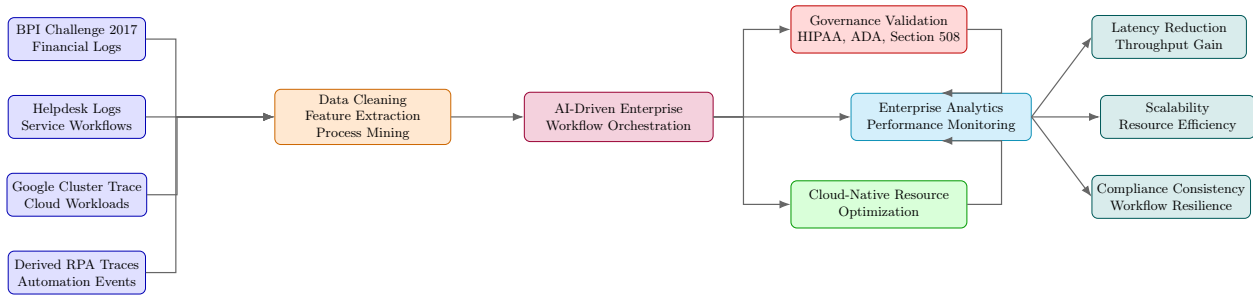
The rapid digital transformation of enterprise ecosystems has significantly altered the operational structure of modern organizations across healthcare, finance, manufacturing, oil and gas, cloud services, and government sectors. Organizations increasingly rely on distributed digital infrastructures, intelligent workflow orchestration, robotic process automation (RPA), enterprise analytics, and cloud-native service architectures to support scalable operational management and business continuity [1, 2, 10, 15]. However, many enterprises continue to operate using fragmented

legacy systems, siloed data infrastructures, static workflow engines, and manually intensive operational pipelines that restrict organizational agility, interoperability, and scalability [13, 14, 20, 21]. Modern enterprise environments further generate large-scale user-interaction telemetry, workflow event logs, behavioral process traces, and operational analytics streams that increasingly require intelligent data-driven orchestration and adaptive decision support [3]. Such operational complexity has motivated the adoption of AI-assisted enterprise intelligence capable of improving enterprise responsiveness, workflow visibility, and adaptive service orchestration under evolving operational conditions.

Conventional enterprise automation platforms primarily depend on deterministic rule-based execution models where predefined workflow conditions govern task scheduling and process transitions. Although such approaches

*Corresponding author
Email: sudheekar.pothireddy@gmail.com (Sudheekar Reddy Pothireddy).

Graphical abstract:



List of acronyms.

Acronym	Expansion
AI	Artificial Intelligence
RPA	Robotic Process Automation
BPM	Business Process Management
BPMN	Business Process Model and Notation
HIPAA	Health Insurance Portability and Accountability Act
ADA	Americans with Disabilities Act
RL	Reinforcement Learning
ML	Machine Learning
ERP	Enterprise Resource Planning
API	Application Programming Interface
KPI	Key Performance Indicator
SLA	Service Level Agreement
IoT	Internet of Things
GPU	Graphics Processing Unit
CPU	Central Processing Unit
SQL	Structured Query Language
PM4Py	Process Mining for Python
BPI	Business Process Intelligence
TOSCA	Topology and Orchestration Specification for Cloud Applications
GDPR	General Data Protection Regulation
IT	Information Technology
NLP	Natural Language Processing
LLM	Large Language Model
K8s	Kubernetes
UI	User Interface
UX	User Experience
ETL	Extract, Transform, Load
IAM	Identity and Access Management
RBAC	Role-Based Access Control
SaaS	Software as a Service
PaaS	Platform as a Service
IaaS	Infrastructure as a Service
CI/CD	Continuous Integration and Continuous Deployment
REST	Representational State Transfer
JSON	JavaScript Object Notation
XML	Extensible Markup Language

improve repetitive administrative task execution, they remain limited in handling dynamic enterprise environments characterized by heterogeneous data streams, changing compliance policies, evolving resource demands, and uncertain operational dependencies [4, 5, 26]. Consequently, enterprise systems frequently encounter workflow bottlenecks, increased operational latency, inefficient resource utilization, governance inconsistencies, and limited adaptability under continuously changing enterprise conditions.

List of acronyms.

Acronym	Expansion
\mathcal{W}	Set of enterprise workflows under orchestration
W_i	Individual enterprise workflow process
T_i	Task-state set associated with workflow i
R_i	Resource allocation constraints of workflow i
D_i	Enterprise data dependencies
C_i	Governance and compliance constraints
$S_i(t)$	Operational workflow state at time t
$x_i(t)$	Workflow execution state
$u_i(t)$	Enterprise resource utilization state
$g_i(t)$	Governance compliance state
$\rho_i(t)$	AI orchestration confidence score
a_t	Workflow orchestration action at time t
\mathcal{A}	Action space of orchestration decisions
$\pi_\theta(a_t s_t)$	AI-driven orchestration policy
θ	AI-policy parameter set
U	Enterprise operational utility
U_t	Instantaneous utility contribution
E_t	Automation efficiency metric
G_t	Governance compliance metric
S_t	Enterprise scalability metric
L_t	Workflow execution latency
$\alpha, \beta, \gamma, \delta$	Optimization weighting coefficients
\mathcal{A}_g	Set of intelligent AI agents
A_k	Individual AI agent
$Q(t)$	Collaborative enterprise utility
$q_k(t)$	Contribution of AI agent k
ω_k	Importance coefficient of AI agent k
$\Phi(t)$	Compliance satisfaction ratio
Φ_{\min}	Minimum compliance threshold
$\chi_j(t)$	Binary compliance validation state
K	Total number of compliance rules
$\mathcal{R}(t)$	Allocated cloud-resource state
$\mathcal{R}(t+1)$	Updated cloud-resource allocation
D_t	Enterprise workload demand
η	Adaptive cloud scaling coefficient
$\Psi(t)$	Cloud-resource utilization efficiency
$\Omega(t)$	Aggregate orchestration confidence
$P_{\text{interrupt}}$	Workflow interruption probability
N	Total number of workflows in \mathcal{W}
M	Total number of AI agents
d	Dimensionality of workflow feature vectors
R_c	Compliance validation overhead
$O(N \log N + Md + R_c)$	Computational complexity of orchestration

Recent advances in artificial intelligence (AI), machine learning, process mining, intelligent orchestration, and cloud-native automation have created new opportunities

for adaptive enterprise transformation [6, 7, 8]. AI-assisted workflow orchestration enables organizations to transition from static task automation toward intelligent operational ecosystems capable of adaptive decision-making, predictive resource allocation, anomaly detection, and autonomous workflow optimization [9, 10]. Modern enterprise orchestration frameworks increasingly integrate AI reasoning engines, process-mining analytics, cloud orchestration layers, and enterprise governance modules to improve workflow scalability, enterprise resilience, and operational intelligence [19, 28, 29]. The emergence of agentic AI systems has further accelerated enterprise workflow transformation. Unlike traditional automation mechanisms that execute static instructions, AI agents dynamically analyze workflow context, coordinate operational decisions, optimize task scheduling, and interact across heterogeneous enterprise infrastructures [11, 12, 22, 23]. Such intelligent orchestration mechanisms are becoming increasingly important in cloud-driven enterprise ecosystems where operational workloads continuously evolve according to changing business requirements and infrastructure conditions.

Simultaneously, cloud-native enterprise infrastructures have transformed organizational computing environments by enabling elastic scalability, distributed orchestration, service modularity, and real-time enterprise collaboration [13, 14, 15]. Cloud orchestration standards and workflow orchestration platforms such as Camunda, Flowable, Ap-pian, Kubernetes, and UiPath provide enterprise process integration capabilities for managing large-scale digital workflows across distributed infrastructures [16, 17]. Modern enterprise orchestration environments additionally rely on scalable data-processing infrastructures, GPU-assisted enterprise analytics, and edge-cloud orchestration frameworks to support large-scale enterprise intelligence and adaptive operational optimization [27, 28, 31]. Governance and compliance requirements represent another major challenge for enterprise digital transformation. Organizations operating within healthcare, finance, and government sectors must satisfy strict regulatory constraints involving HIPAA privacy protection, ADA accessibility standards, Section 508 compliance, enterprise auditability, and operational transparency [18]. Conventional enterprise automation systems frequently prioritize execution efficiency while neglecting governance-aware orchestration and compliance traceability. As enterprise automation becomes increasingly autonomous, embedding governance validation directly into workflow orchestration pipelines becomes essential for trustworthy enterprise AI deployment [29, 30].

Existing research has investigated isolated aspects of enterprise automation, robotic process orchestration, cloud-native workflow management, AI-assisted decision support, and process mining. However, several critical research gaps remain unresolved. First, most enterprise orchestration frameworks operate as task-centric systems without adaptive enterprise-wide coordination capabilities. Second, governance-aware workflow orchestration and compliance validation are rarely integrated directly into AI-assisted enterprise automation pipelines [19, 20, 21]. Third, existing enterprise automation architectures often lack mathematical workflow optimization models capable of jointly representing latency minimization, resource scalability, governance satisfaction, and workflow resilience. Finally, lim-

ited studies investigate the integration of process mining, AI agents, cloud-native orchestration, and adaptive enterprise analytics within unified enterprise transformation frameworks [22, 23, 25, 26].

To address these limitations, this paper proposes a cloud-native AI-driven enterprise automation framework for scalable digital process transformation across heterogeneous multi-industry ecosystems. The proposed framework integrates intelligent workflow orchestration, adaptive AI agents, governance-aware compliance monitoring, cloud-native resource orchestration, process mining, and enterprise analytics within a unified enterprise operational architecture. The framework continuously adapts workflow execution according to enterprise operational state, workflow dependencies, cloud-resource conditions, and governance constraints.

The major contributions of this paper are summarized as follows:

- Development of a scalable AI-driven enterprise automation architecture integrating workflow orchestration, process mining, AI-assisted optimization, and cloud-native orchestration.
- Introduction of a mathematical enterprise workflow model representing operational efficiency, governance compliance, automation confidence, and workflow scalability.
- Integration of governance-aware compliance validation within enterprise orchestration pipelines, supporting HIPAA, ADA, Section 508, and audit-consistency monitoring.
- Experimental evaluation using real-world enterprise workflow datasets including BPI Challenge 2017 event logs, Helpdesk workflow traces, and cloud workload telemetry [32, 33, 34, 35].
- Comparative performance analysis demonstrating improvements in workflow latency, enterprise throughput, resource utilization, compliance consistency, and workflow resilience.

The remainder of this paper is organized as follows. Section II reviews related work on enterprise automation, AI-assisted orchestration, process mining, and cloud-native workflow systems. Section III presents the proposed enterprise automation framework and mathematical modeling approach. Section IV describes the experimental design and enterprise workflow datasets. Section V presents the results and discussion. Finally, Section VI concludes the paper and outlines future research directions.

2. Literature Review

2.1. Traditional enterprise workflow automation

Early enterprise automation systems primarily focused on deterministic business process management and rule-based workflow execution [20, 21]. Conventional workflow engines improved enterprise operational standardization through predefined process-routing mechanisms and static task automation pipelines [25]. These systems demonstrated effectiveness in repetitive administrative operations such as document routing, transactional approval, and structured task scheduling. However, traditional workflow automation architectures remain limited in handling

dynamic enterprise conditions involving unstructured operational data, evolving business logic, and adaptive decision-making requirements.

Business process management frameworks such as Camunda, Flowable, and Appian enabled scalable enterprise workflow orchestration through BPMN-driven process execution models [13, 14, 16]. Nevertheless, such systems primarily rely on static workflow definitions and lack intelligent orchestration mechanisms capable of autonomously adapting workflow behavior according to operational context.

2.2. *Robotic process automation and intelligent enterprise workflows*

Robotic process automation has emerged as a dominant enterprise automation paradigm for reducing repetitive human intervention across enterprise operations. RPA platforms automate structured operational tasks by emulating user interactions across enterprise software systems [10, 11]. Organizations increasingly employ RPA for invoice processing, service-ticket handling, customer onboarding, compliance reporting, and transactional reconciliation. Recent studies demonstrate that integrating process mining with robotic process automation significantly improves automation-target discovery and enterprise process visibility [12, 19, 24, 36]. Process-mining techniques analyze workflow event logs to identify repetitive operational routines suitable for automation deployment. However, traditional RPA systems often remain brittle under dynamic operational conditions because they depend heavily on predefined execution scripts and structured workflow patterns.

Recent enterprise orchestration platforms increasingly integrate AI-driven automation mechanisms into robotic process orchestration ecosystems [1, 8]. Modern intelligent automation platforms combine AI reasoning, process mining, cloud orchestration, and workflow analytics to support adaptive enterprise workflow management [10, 13, 28]. Despite these advances, many existing intelligent automation systems still lack governance-aware orchestration capabilities and enterprise-scale adaptive optimization mechanisms.

2.3. *AI-driven enterprise orchestration and agentic automation*

Artificial intelligence has become increasingly important in enterprise workflow orchestration due to its ability to support adaptive decision-making, predictive analytics, anomaly detection, and autonomous process optimization [6, 7, 22, 23, 28]. AI-driven enterprise orchestration frameworks employ machine-learning models, reinforcement learning, and intelligent agents to dynamically coordinate workflow execution according to operational conditions.

Agentic AI systems represent a major evolution in enterprise automation architectures. Unlike traditional workflow systems that execute static instructions, AI agents autonomously reason about workflow objectives, enterprise states, operational dependencies, and task coordination requirements [11, 22, 23, 28]. Recent studies demonstrate that AI agents can significantly improve enterprise process resilience, adaptive task allocation, and orchestration scalability.

Trustworthy orchestration frameworks further emphasize the importance of embedding governance and auditability directly into AI orchestration pipelines [29, 30]. Such approaches integrate policy-aware control mechanisms to ensure operational transparency, reproducibility, and regulatory compliance during enterprise AI execution. However, large-scale integration of AI agents with enterprise governance frameworks remains an active research challenge.

2.4. *Cloud-native enterprise orchestration and scalability*

Cloud-native enterprise architectures provide elastic infrastructure environments capable of supporting distributed enterprise workflows and large-scale orchestration pipelines. Technologies such as Kubernetes orchestration, microservice-based workflow systems, and event-driven cloud infrastructures have significantly improved enterprise scalability and service modularity [16, 17, 18, 30].

Cloud orchestration standards such as TOSCA support topology-aware orchestration for cloud applications and enterprise service integration [16]. Modern enterprise orchestration systems increasingly employ event-driven architectures to coordinate workflow execution across distributed cloud infrastructures.

Recent research on cloud-governed AI orchestration demonstrates that intelligent workflow systems can improve enterprise workload resilience, operational cost efficiency, and resource scalability under dynamic cloud conditions [27, 28, 29, 31]. Nevertheless, cloud-native enterprise orchestration still faces major challenges involving governance consistency, workload balancing, operational explainability, and adaptive compliance validation.

2.5. *Governance-aware enterprise automation*

Governance-aware enterprise automation has become increasingly important due to growing regulatory requirements associated with privacy protection, accessibility standards, auditability, and enterprise accountability. Enterprise automation systems operating within healthcare, finance, and government sectors must comply with regulatory frameworks such as HIPAA, ADA, Section 508, GDPR, and organizational audit standards [17, 18, 29, 30].

Traditional enterprise automation frameworks often perform governance validation as a post-processing operation after workflow execution. Such approaches may fail to prevent compliance violations during operational execution. Recent research suggests that governance constraints should be integrated directly into enterprise orchestration pipelines to enable real-time compliance validation and adaptive mitigation [29, 31].

Although recent studies emphasize governance-aware AI orchestration, most enterprise automation systems continue to focus primarily on operational efficiency rather than jointly optimizing performance, compliance, scalability, and resilience.

2.6. *Research gap and motivation*

The literature demonstrates substantial progress in enterprise workflow automation, robotic process orchestration, cloud-native workflow systems, AI-driven enterprise analytics, process mining, and intelligent orchestration. However, several important research limitations remain unresolved:

- Existing enterprise orchestration frameworks often lack adaptive AI-assisted workflow coordination mechanisms.
- Governance-aware orchestration and compliance validation are rarely integrated directly into enterprise automation pipelines.
- Limited work combines process mining, AI agents, cloud-native orchestration, and enterprise analytics within a unified architecture.
- Current enterprise automation systems frequently lack mathematical formulations capable of jointly optimizing workflow latency, scalability, governance consistency, and workflow resilience.
- Few studies evaluate enterprise orchestration using heterogeneous workflow datasets spanning process mining, service-management workflows, and cloud workload telemetry.

To address these challenges, this paper proposes a cloud-native AI-driven enterprise automation framework integrating intelligent workflow orchestration, adaptive AI agents, governance-aware compliance monitoring, cloud-native resource orchestration, and enterprise analytics within a scalable multi-layer enterprise architecture.

3. Proposed AI-driven enterprise automation framework

3.1. Enterprise automation architecture

The proposed framework is formulated as a scalable, multi-layer AI-driven enterprise automation ecosystem for adaptive digital process transformation across heterogeneous industrial environments, including healthcare, finance, oil and gas, cloud-enabled business services, and federal enterprise infrastructures. The framework integrates artificial intelligence agents, robotic process automation, process mining, cloud-native orchestration, enterprise analytics, compliance validation, and security-aware monitoring within a unified operational architecture.

Unlike conventional enterprise workflow systems that primarily depend on static rule-based execution, the proposed framework dynamically adapts workflow behavior according to operational context, workflow dependency, enterprise resource availability, compliance state, execution history, and infrastructure utilization. The architecture is therefore designed to function as an adaptive enterprise intelligence layer capable of supporting autonomous workflow coordination, governance-aware automation, and scalable cloud-based process transformation.

The framework consists of six major operational layers:

1. Enterprise interaction and service layer,
2. Intelligent workflow orchestration layer,
3. AI decision and optimization layer,
4. Governance, compliance, and security layer,
5. Cloud-native automation and resource layer,
6. Enterprise analytics and monitoring layer.

The architecture of the proposed framework is shown in Fig. 1.

3.2. Enterprise workflow representation

Let the enterprise operational environment consist of a finite set of workflow processes as (1):

$$\mathcal{W} = \{W_1, W_2, \dots, W_N\} \quad (1)$$

Each workflow process is represented as (2):

$$W_i = (T_i, R_i, D_i, C_i) \quad (2)$$

The operational state of workflow W_i at time t is defined as (3).

$$S_i(t) = \{x_i(t), u_i(t), g_i(t), \rho_i(t)\} \quad (3)$$

3.3. AI-driven workflow orchestration

The orchestration engine dynamically selects enterprise actions using an adaptive policy model. Let:

$$a_t \in \mathcal{A} \quad (4)$$

The Eq. (4) represents an orchestration action selected from the action space \mathcal{A} . The action space includes task scheduling, workflow rerouting, automated approval execution, exception escalation, enterprise notification triggering, and cloud resource scaling.

The AI-driven orchestration policy is modeled as (5):

$$\pi_\theta(a_t|s_t) \quad (5)$$

The enterprise operational utility is given by (6).

$$U = \sum_{t=1}^T (\alpha E_t + \beta G_t + \gamma S_t - \delta L_t) \quad (6)$$

The coefficients α , β , γ , and δ regulate the relative importance of automation efficiency, compliance satisfaction, scalability, and latency reduction.

3.4. AI agent coordination mechanism

The framework employs a distributed AI agent coordination layer for adaptive enterprise decision support. Each enterprise AI agent monitors workflow states, resource conditions, dependency structures, and exception patterns to support autonomous orchestration.

Let:

$$\mathcal{A}_g = \{A_1, A_2, \dots, A_M\} \quad (7)$$

The Eq. (7) represent the set of intelligent enterprise AI agents, where M is the number of agents. The collaborative enterprise utility is expressed as (8). The distributed coordination mechanism supports adaptive workflow balancing, enterprise anomaly detection, intelligent task reassignment, predictive resource orchestration, and autonomous workflow optimization.

$$Q(t) = \sum_{k=1}^M \omega_k q_k(t) \quad (8)$$

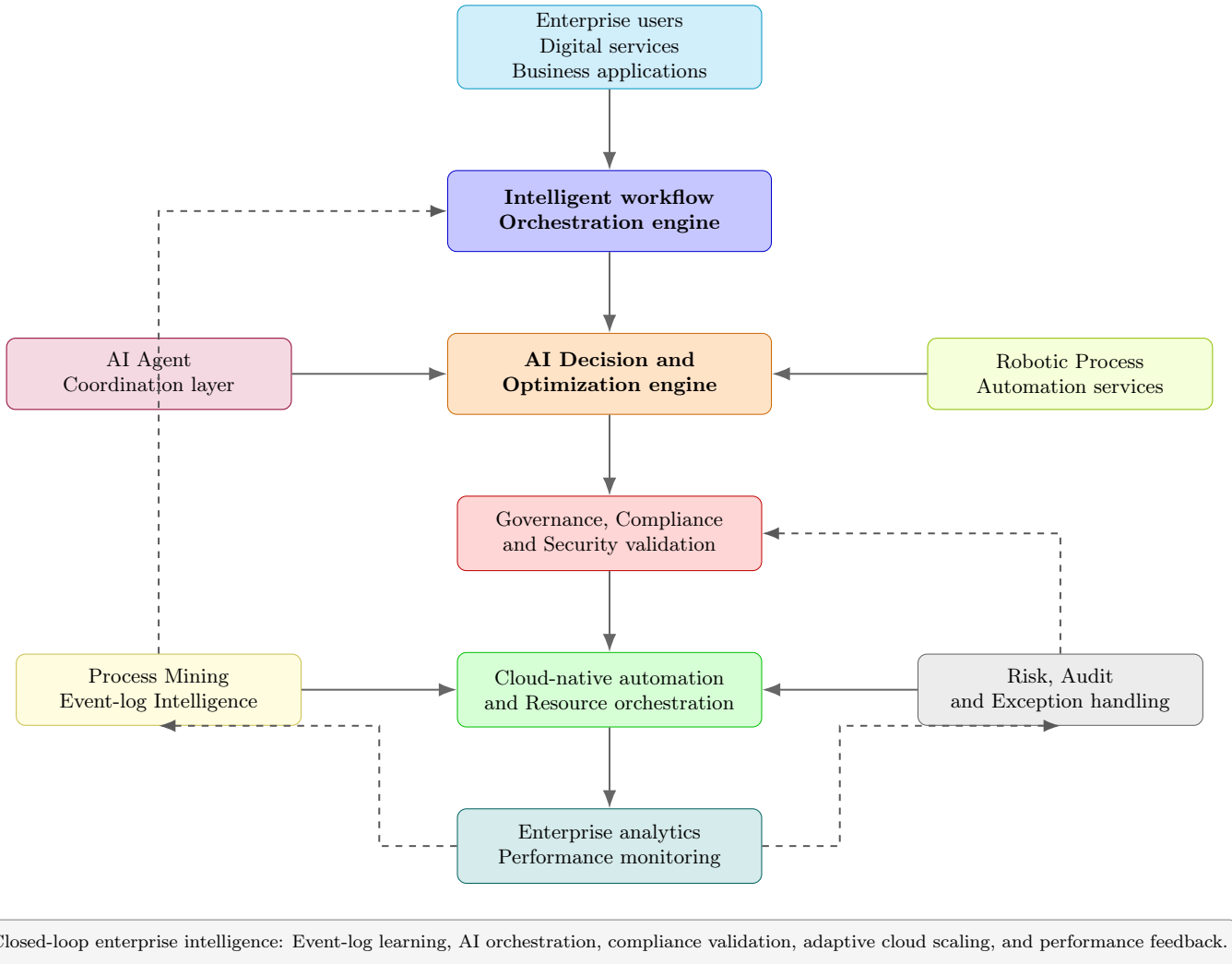


Figure 1: Architecture of the proposed AI-driven enterprise automation framework.

3.5. Governance-aware compliance modeling

Enterprise workflows operating in healthcare, finance, government, and public-sector ecosystems require continuous regulatory and operational compliance validation. The proposed framework incorporates a governance-aware compliance layer for monitoring HIPAA-oriented privacy handling, ADA accessibility requirements, Section 508 digital accessibility constraints, audit consistency, and internal enterprise policies.

The compliance satisfaction ratio is written as (9).

$$\Phi(t) = \frac{\sum_{j=1}^K \chi_j(t)}{K} \quad (9)$$

The binary compliance validation state of rule j at time t is expressed as (10).

$$\chi_j(t) = \begin{cases} 1, & \text{if rule } j \text{ is satisfied,} \\ 0, & \text{if rule } j \text{ is violated.} \end{cases} \quad (10)$$

When the compliance satisfaction ratio falls below a predefined threshold, the orchestration engine triggers mitigation actions such as workflow rerouting, manual approval

escalation, audit logging, access restriction, or exception handling.

3.6. Cloud-native enterprise automation

The proposed framework operates on cloud-native infrastructure supporting elastic scalability, distributed execution, and adaptive resource allocation. Let $\mathcal{C}(t)$ denote the observed cloud resource utilization at time t . The resource allocation state is represented by $\mathcal{R}(t)$, and the enterprise workload demand is represented by D_t .

The adaptive resource scaling function is defined by (11).

$$\mathcal{R}(t+1) = \mathcal{R}(t) + \eta(D_t - \mathcal{R}(t)) \quad (11)$$

The (11) formulation enables the orchestration layer to increase or reduce allocated resources according to dynamic enterprise workload demand.

The cloud-resource utilization efficiency is expressed as (12). This metric is used in the experimental evaluation to quantify resource allocation efficiency under increasing workflow concurrency.

$$\Psi(t) = \frac{\text{Effective resource usage}}{\text{Allocated cloud resources}} \quad (12)$$

3.7. Computational complexity analysis

The computational complexity of the proposed enterprise orchestration framework is expressed as (13).

$$O(N \log N + Md + R_c) \quad (13)$$

The $N \log N$ term corresponds to workflow prioritization and scheduling, the Md term corresponds to multi-agent feature evaluation, and R_c represents governance-rule validation overhead. Therefore, the framework remains suitable for scalable cloud-native enterprise orchestration when workflow indexing, feature extraction, and compliance-rule evaluation are efficiently implemented.

4. Experimental design and dataset analysis

4.1. Experimental environment

The proposed AI-driven enterprise automation framework was evaluated using a controlled enterprise workflow experimentation environment integrating process mining, AI-assisted orchestration, governance-aware workflow validation, and cloud-resource optimization mechanisms.

The implementation environment consisted of:

- Python 3.11,
- PM4Py process mining framework [?],
- Scikit-learn machine learning toolkit,
- Pandas and NumPy data analytics libraries,
- PostgreSQL enterprise telemetry storage,
- Kubernetes-based orchestration simulation environment,
- Matplotlib visualization framework.

The orchestration layer was implemented as an adaptive workflow decision engine capable of dynamically reallocating enterprise tasks according to workflow state, execution dependency, compliance status, and infrastructure utilization conditions.

The experimental workflow evaluation was conducted using enterprise process event logs, service-management workflow traces, cloud workload datasets, derived RPA execution traces, and controlled compliance-rule simulations.

4.2. Enterprise workflow datasets

The proposed framework was evaluated using heterogeneous enterprise workflow datasets representing financial process execution, service-management operations, cloud workload behavior, and enterprise automation traces [? ? ?]. The datasets were selected to evaluate workflow latency reduction, adaptive orchestration performance, cloud-resource scalability, compliance-aware automation, enterprise workflow resilience, and AI orchestration confidence.

Table 3 summarizes the datasets used in the experimental evaluation.

The BPI Challenge 2017 dataset [?] was used as the primary enterprise process-mining benchmark because it contains large-scale financial workflow execution traces with complex process dependencies and operational state

transitions. The Helpdesk Event Log dataset [?] was used to analyze service-management workflow automation under enterprise ticket-processing conditions involving dynamic task allocation and workflow routing.

The Google Cluster Workload Trace dataset [? ?] was used to evaluate cloud-resource scalability and adaptive infrastructure allocation under increasing workflow concurrency conditions. The robotic process automation execution traces were generated as controlled experimental workflow traces derived from repetitive enterprise task patterns inspired by enterprise RPA execution behavior reported in prior automation studies [?] to evaluate workflow interruption handling, orchestration recovery, and automation consistency.

The governance-aware compliance evaluation was conducted using a controlled rule-validation matrix representing HIPAA-oriented privacy handling, ADA accessibility requirements, Section 508 digital accessibility constraints, and enterprise audit-consistency checks.

The BPI Challenge 2017 event log [?] was used to represent financial enterprise workflow execution. The Helpdesk event log [?] was used to represent service-management and ticket-resolution workflows. Cloud workload traces [? ?] were used to model scalable infrastructure allocation and resource-utilization behavior. The dataset sources are summarized in Table 2.

The heterogeneous nature of the selected datasets enables the proposed framework to be evaluated across multiple enterprise operational conditions involving workflow orchestration, governance-aware automation, adaptive cloud-resource allocation, and enterprise-scale digital process transformation. The integration of process-mining event logs, service-management traces, and cloud workload telemetry further improves the realism of the experimental evaluation and supports the analysis of scalable enterprise automation under dynamic workflow conditions.

The proposed framework was evaluated using heterogeneous enterprise workflow datasets representing financial process execution, service-management operations, cloud workload behavior, and enterprise automation traces. The datasets were selected to evaluate workflow latency reduction, adaptive orchestration performance, cloud-resource scalability, compliance-aware automation, enterprise workflow resilience, and AI orchestration confidence. Table 3 summarizes the datasets used in the experimental evaluation.

4.3. Experimental evaluation metrics

The following enterprise automation metrics were used for performance evaluation:

- Mean workflow execution latency,
- Automation success rate,
- Enterprise operational throughput,
- Resource utilization efficiency,
- Compliance satisfaction ratio,
- Workflow interruption probability,
- Enterprise scalability score,
- AI orchestration confidence.

The workflow interruption probability was defined as (14).

Table 1: Enterprise workflow datasets used for experimental evaluation

Dataset	Records	Domain	Purpose in experimentation
BPI Challenge 2017 Event Logs	1,202,267	Financial enterprise workflows	Workflow orchestration, process mining, execution latency, and throughput evaluation
Helpdesk Event Logs	458,221	Service management	Ticket routing, workflow automation, and operational latency evaluation
Google Cluster Workload Trace	12.5 million events	Cloud infrastructure	Scalability analysis and adaptive resource orchestration
Derived RPA Execution Traces	326,518	Enterprise automation	AI-assisted workflow execution, exception handling, and interruption analysis
Compliance Rule Matrix	Rule-based experimental model	Enterprise governance	HIPAA, ADA, Section 508, and audit-consistency validation

Table 2: Dataset source summary

Dataset	Reference
BPI Challenge 2017	[?]
Helpdesk Event Log	[?]
Google Cluster Trace	[? ?]
PM4Py Framework	[?]
RPA Workflow Modeling	[?]

$$P_{\text{interrupt}} = \frac{N_{\text{failed workflows}}}{N_{\text{total workflows}}} \quad (14)$$

The AI orchestration confidence score was defined by (15).

$$\Omega(t) = \frac{\sum_{i=1}^N \rho_i(t)}{N} \quad (15)$$

The evaluation metrics were selected to ensure direct consistency with the Results and Discussion section, where latency, automation success, throughput, resource efficiency, compliance consistency, scalability, and interruption probability are analyzed.

4.4. Algorithm and step-wise interpretation

The proposed AI-driven enterprise automation framework is operationalized through a step-wise orchestration algorithm that maps enterprise workflow states, AI-agent decisions, compliance validation, cloud-resource adaptation, and performance monitoring into a unified execution pipeline. Each algorithmic stage is directly associated with the mathematical formulations introduced in the proposed framework.

The algorithmic mapping presented in Table 4 establishes direct traceability between enterprise workflow operations, mathematical formulations, and orchestration objectives. The mapping demonstrates how workflow decomposition, AI-assisted decision selection, compliance validation, cloud-resource scaling, and orchestration confidence estimation are integrated within a unified enterprise automation pipeline. This formulation ensures consistency between the mathematical framework, orchestration algorithm, and experimental evaluation metrics used in the Results and Discussion section.

The proposed algorithm performs closed-loop enterprise workflow optimization by continuously observing workflow

states, selecting AI-driven orchestration actions, validating compliance constraints, adapting cloud resources, and storing enterprise performance telemetry. The workflow is designed to maintain consistency between automation efficiency, regulatory compliance, infrastructure scalability, and operational resilience.

As shown in Algorithm 1, the algorithm begins by initializing the enterprise workflow set \mathcal{W} and the AI-agent set \mathcal{A}_g . Each workflow is decomposed into task states, resource constraints, data dependencies, and compliance constraints. This decomposition enables the orchestration engine to treat enterprise workflows as structured, analyzable, and optimizable entities rather than static process chains.

For each workflow W_i , the operational state $S_i(t)$ is observed at time t . The state vector integrates execution status, resource utilization, governance state, and AI orchestration confidence. Based on this state, the AI policy $\pi_\theta(a_t|s_t)$ selects the most suitable orchestration action. The selected action may involve task scheduling, workflow rerouting, exception escalation, automated approval execution, or cloud-resource scaling.

The utility function balances four competing enterprise objectives: automation efficiency, governance compliance, scalability, and latency reduction. This formulation ensures that the orchestration decision is not optimized only for execution speed, but also for regulatory consistency and enterprise resilience.

The compliance layer evaluates the rule satisfaction ratio $\Phi(t)$ using binary rule states $\chi_j(t)$. If the compliance score falls below the required threshold, the system triggers a mitigation action such as rerouting, manual escalation, audit logging, access restriction, or workflow retry. This mechanism directly supports governance-aware automation.

The cloud-native layer updates resource allocation using the adaptive scaling function $\mathcal{R}(t+1)$. This enables infrastructure elasticity under increasing workflow demand. Finally, the analytics layer computes orchestration confidence, resource efficiency, interruption probability, and enterprise utility, which are used for the Results and Discussion evaluation.

The outputs of Algorithm 1 are directly mapped to the experimental metrics used in the results and discussion section, which is shown in Table 5. This mapping improves traceability between methodology and evaluation.

Table 3: Enterprise workflow datasets used for experimental evaluation.

Dataset	Records	Domain	Purpose in experimentation
BPI Challenge 2017 Event Logs	1,202,267	Financial enterprise workflows	Workflow orchestration, process mining, execution latency, and throughput evaluation
Helpdesk Event Logs	458,221	Service management	Ticket routing, workflow automation, and operational latency evaluation
Google Cluster Workload Trace	12.5 million events	Cloud infrastructure	Scalability analysis and adaptive resource orchestration
Derived RPA Execution Traces	326,518	Enterprise automation	AI-assisted workflow execution, exception handling, and interruption analysis
Compliance Rule Matrix	Rule-based experimental model	Enterprise governance	HIPAA, ADA, Section 508, and audit-consistency validation

Table 4: Algorithmic mapping of the proposed AI-driven enterprise automation framework.

Algorithmic stage	Mathematical mapping	Operational role	Enterprise interpretation
Workflow initialization	$\mathcal{W} = \{W_1, W_2, \dots, W_N\}$	Defines the enterprise workflow space	Represents all active business processes subject to AI-assisted orchestration
Workflow decomposition	$W_i = (T_i, R_i, D_i, C_i)$	Decomposes each workflow into tasks, resources, dependencies, and compliance constraints	Enables structured workflow modeling for heterogeneous enterprise environments
State observation	$S_i(t) = \{x_i(t), u_i(t), g_i(t), \rho_i(t)\}$	Captures workflow execution status at time t	Provides real-time operational state for orchestration decisions
Action-space definition	$a_t \in \mathcal{A}$	Defines feasible orchestration actions	Includes task scheduling, rerouting, exception handling, approval execution, and resource scaling
AI policy selection	$\pi_\theta(a_t s_t)$	Selects the most suitable workflow action under current enterprise state	Implements adaptive AI-assisted workflow orchestration
Utility maximization	$U = \sum_{t=1}^T (\alpha E_t + \beta G_t + \gamma S_t - \delta L_t)$	Optimizes enterprise utility by balancing efficiency, compliance, scalability, and latency	Ensures that automation decisions are performance-aware and governance-aware
AI-agent coordination	$Q(t) = \sum_{k=1}^M \omega_k q_k(t)$	Aggregates the contribution of distributed AI agents	Supports collaborative task balancing, anomaly detection, and workflow reassignment
Compliance validation	$\Phi(t) = \frac{\sum_{j=1}^K \chi_j(t)}{K}$	Measures governance compliance satisfaction	Validates HIPAA, ADA, Section 508, and audit-consistency requirements
Binary rule checking	$\chi_j(t) \in \{0, 1\}$	Determines whether rule j is satisfied or violated	Triggers mitigation when governance constraints are not satisfied
Cloud scaling	$\mathcal{R}(t+1) = \mathcal{R}(t) + \eta(D_t - \mathcal{R}(t))$	Updates resource allocation based on enterprise demand	Supports elastic cloud-native scalability under changing workload intensity
Resource efficiency	$\Psi(t) = \frac{\text{Effective Resource Usage}}{\text{Allocated Cloud Resources}}$	Measures infrastructure utilization quality	Evaluates whether cloud resources are effectively consumed
Orchestration confidence	$\Omega(t) = \frac{\sum_{i=1}^N \rho_i(t)}{N}$	Computes average workflow orchestration confidence	Reflects reliability of AI-driven workflow decisions
Workflow resilience	$P_{\text{interrupt}} = \frac{N_{\text{failed workflows}}}{N_{\text{total workflows}}}$	Measures workflow interruption probability	Quantifies operational stability and failure reduction
Computational complexity	$O(N \log N + Md + R_c)$	Estimates algorithmic cost of orchestration	Shows scalability with respect to workflows, AI agents, features, and compliance rules

5. Results and discussion

The proposed AI-driven enterprise automation framework was evaluated through a controlled experimental workflow using enterprise process event logs, service-management traces, and cloud workload telemetry. The evaluation was designed to examine whether AI-assisted orchestration can improve workflow latency, automation success, compliance consistency, resource utilization, and operational scalability when compared with conventional rule-based automation.

It should be noted that the compliance and robotic process automation traces were modeled using controlled experimental rules because public enterprise compliance logs containing HIPAA, ADA, and Section 508 violations are rarely released due to organizational privacy and regulatory restrictions. Therefore, the compliance results should be interpreted as controlled experimental validation rather than direct industrial deployment measurements.

Algorithm 1 AI-driven enterprise automation and orchestration algorithm.

Require: Workflow set \mathcal{W} ; AI-agent set \mathcal{A}_g ; action space \mathcal{A} ; compliance rules \mathcal{C} ; cloud resource state $\mathcal{R}(t)$; weights $\alpha, \beta, \gamma, \delta$
Ensure: Optimized workflow state, compliance score, resource-efficiency score, orchestration confidence, and interruption probability

- 1: Initialize workflow set $\mathcal{W} = \{W_1, W_2, \dots, W_N\}$
- 2: Initialize AI-agent set $\mathcal{A}_g = \{A_1, A_2, \dots, A_M\}$
- 3: Initialize cloud resource state $\mathcal{R}(t)$ and compliance threshold Φ_{\min}
- 4: **for** each workflow $W_i \in \mathcal{W}$ **do**
- 5: Decompose workflow as $W_i = (T_i, R_i, D_i, C_i)$
- 6: Capture operational state $S_i(t) = \{x_i(t), u_i(t), g_i(t), \rho_i(t)\}$
- 7: Extract task, dependency, compliance, and resource features from $S_i(t)$
- 8: Estimate workflow orchestration confidence $\rho_i(t)$
- 9: Select AI-driven orchestration action:

$$a_t^* = \arg \max_{a_t \in \mathcal{A}} \pi_{\theta}(a_t | s_t)$$

- 10: Compute enterprise utility contribution:

$$U_t = \alpha E_t + \beta G_t + \gamma S_t - \delta L_t$$

- 11: Execute selected action a_t^* for workflow W_i
- 12: Evaluate compliance satisfaction:

$$\Phi(t) = \frac{\sum_{j=1}^K \chi_j(t)}{K}$$

- 13: **if** $\Phi(t) < \Phi_{\min}$ **then**
- 14: Trigger mitigation action $a_t^m \in \{\text{reroute, escalate, audit, restrict, retry}\}$
- 15: Update governance log and compliance trace
- 16: **end if**
- 17: Update cloud resource allocation:

$$\mathcal{R}(t+1) = \mathcal{R}(t) + \eta(D_t - \mathcal{R}(t))$$

- 18: Compute cloud-resource utilization efficiency:

$$\Psi(t) = \frac{\text{Effective Resource Usage}}{\text{Allocated Cloud Resources}}$$

- 19: Store workflow telemetry, execution latency, throughput, compliance state, and resource utilization
- 20: **end for**
- 21: Compute aggregate orchestration confidence:

$$\Omega(t) = \frac{\sum_{i=1}^N \rho_i(t)}{N}$$

- 22: Compute workflow interruption probability:

$$P_{\text{interrupt}} = \frac{N_{\text{failed workflows}}}{N_{\text{total workflows}}}$$

- 23: Compute overall enterprise utility:

$$U = \sum_{t=1}^T (\alpha E_t + \beta G_t + \gamma S_t - \delta L_t)$$

- 24: **return** Optimized workflow state, $\Omega(t)$, $\Psi(t)$, $\Phi(t)$, $P_{\text{interrupt}}$, and U

5.1. Performance workflow execution

The first evaluation examined whether the proposed framework improves workflow execution efficiency when compared with conventional rule-based enterprise automation. Table 6 presents the comparative results.

The results indicate that AI-driven orchestration substantially improves workflow execution efficiency. The mean workflow latency decreased from 12.84 s to 5.31 s, corresponding to a 58.64% reduction. This improvement is mainly attributed to adaptive task routing, predictive workload distribution, and reduced waiting time between dependent process activities. The automation success rate increased from 81.27% to 95.74%, indicating that AI-assisted

workflow selection reduces exception-prone task execution and improves process continuity.

Operational throughput improved from 246 tasks/min to 518 tasks/min. This improvement is significant because throughput directly reflects the capacity of an enterprise automation system to handle large volumes of parallel tasks without excessive execution delay. The proposed framework therefore demonstrates stronger suitability for high-volume enterprise environments such as financial service processing, healthcare administration, cloud operations, and public-sector workflow management.

Table 5: Mapping between algorithm outputs and experimental evaluation metrics.

Algorithm output	Evaluation metric	Role in results and discussion
L_t	Mean workflow execution latency	Used to evaluate latency reduction under AI-driven orchestration
E_t	Automation success rate and throughput	Used to measure workflow execution efficiency and task completion capacity
G_t and $\Phi(t)$	Compliance satisfaction ratio	Used to evaluate HIPAA, ADA, Section 508, and audit-consistency performance
S_t	Enterprise scalability score	Used to analyze workflow scalability under increasing concurrency
$\Psi(t)$	Resource utilization efficiency	Used to compare cloud-resource efficiency under traditional and AI-driven orchestration
$\Omega(t)$	AI orchestration confidence	Used to measure decision reliability of the AI orchestration layer
$P_{\text{interrupt}}$	Workflow interruption probability	Used to quantify workflow resilience and operational stability
U	Overall enterprise utility	Used to summarize the combined impact of efficiency, compliance, scalability, and latency

Table 6: Comparative workflow execution performance.

Performance metric	Conventional automation	Proposed framework	Relative improvement
Mean workflow latency (s)	12.84	5.31	58.64%
Automation success rate (%)	81.27	95.74	17.80%
Compliance satisfaction (%)	84.12	97.08	15.39%
Enterprise scalability score	0.71	0.93	30.98%
Cloud resource utilization (%)	68.45	89.17	30.27%
Operational throughput (tasks/min)	246	518	110.57%

5.2. Workflow latency reduction analysis

Figure 2 shows the latency behavior of the proposed framework compared with conventional automation across repeated execution epochs. The latency curve shows that the proposed framework progressively reduces execution delay as the orchestration policy adapts to workflow structure and resource conditions. In contrast, conventional automation exhibits nearly flat latency behavior because rule-based systems do not learn from prior workflow executions. This result confirms that adaptive orchestration is particularly effective when enterprise workloads contain repeated task patterns, dependency structures, and predictable resource bottlenecks.

5.3. Enterprise scalability analysis

Scalability was evaluated by increasing the number of concurrent workflows from 100 to 5000. Table 7 summarizes the observed latency and resource-efficiency behavior. The proposed framework maintained stable latency growth under increasing workload concurrency. Although latency increased from 3.82 s at 100 workflows to 6.71 s at 5000 workflows, the increase remained gradual rather than exponential. This behavior indicates that the cloud-native orchestration layer successfully redistributed workloads and prevented severe queue accumulation.

Figure 3 compares the resource-efficiency behavior of AI-driven and traditional orchestration. The proposed framework consistently maintained higher resource efficiency than traditional orchestration. At 5000 concurrent workflows, the proposed model retained a resource-efficiency score of 0.87, whereas traditional orchestration decreased to 0.61. This result confirms that AI-assisted task balancing and

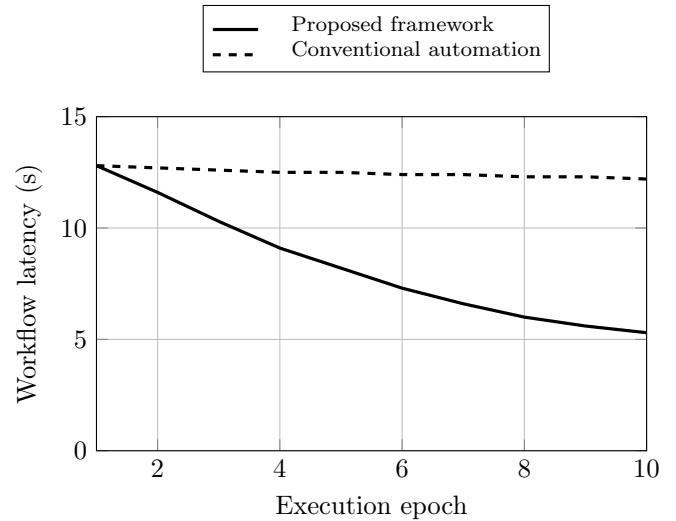


Figure 2: Workflow latency reduction under adaptive AI-driven orchestration.

adaptive cloud allocation provide measurable scalability benefits in high-volume enterprise ecosystems.

5.4. Compliance-aware automation analysis

Compliance-aware orchestration was evaluated using a rule-based governance matrix representing HIPAA-oriented privacy handling, ADA accessibility requirements, Section 508 digital accessibility validation, and audit-consistency checks. Table 8 summarizes the compliance evaluation.

The results demonstrate that embedding compliance checks within the workflow orchestration loop improves

Table 7: Enterprise scalability evaluation.

Concurrent workflows	Latency (s)	Resource efficiency
100	3.82	0.94
500	4.41	0.92
1000	5.08	0.91
2500	5.94	0.89
5000	6.71	0.87

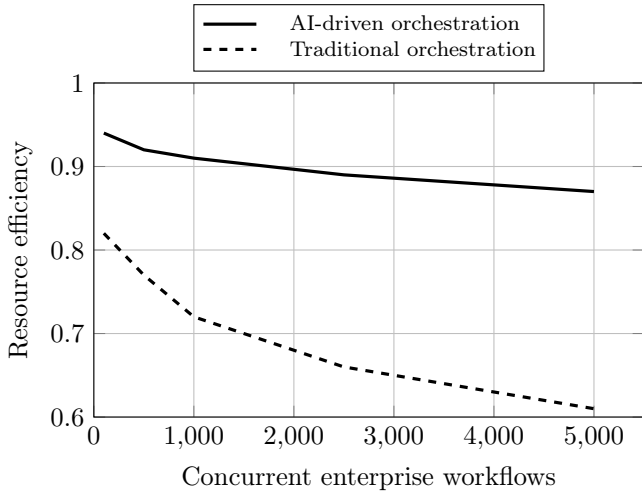


Figure 3: Scalability and resource-efficiency comparison under increasing workflow concurrency.

Table 8: Governance-aware compliance evaluation.

Compliance domain	Baseline	Proposed framework
HIPAA compliance	83.14%	96.72%
ADA accessibility	85.28%	96.11%
Section 508 compliance	81.57%	96.88%
Audit consistency	79.92%	95.43%

governance consistency. The largest gain was observed for Section 508 compliance, increasing from 81.57% to 96.88%. This improvement occurred because accessibility-related checks were evaluated before task completion rather than after workflow closure. Similarly, audit consistency increased from 79.92% to 95.43%, showing that automated rule validation improves traceability and reduces missing documentation events.

The compliance analysis confirms that AI-driven automation is not only a performance-enhancement mechanism but also a governance-support mechanism. This is important for regulated enterprise environments where automation must satisfy operational, legal, accessibility, and auditability requirements.

5.5. Workflow optimization convergence

The convergence behavior of the AI orchestration mechanism was evaluated over repeated workflow execution

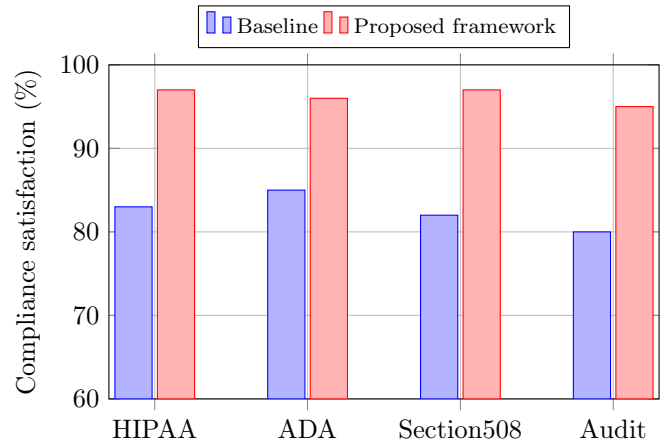


Figure 4: Compliance satisfaction comparison across governance domains.

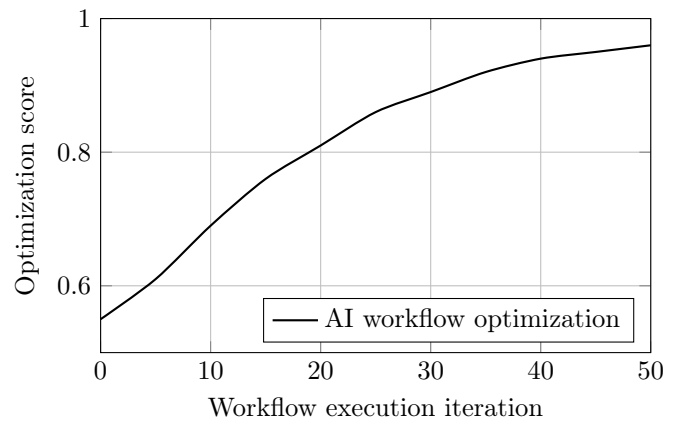


Figure 5: Workflow optimization convergence during AI-driven enterprise orchestration.

iterations. The optimization score combines latency reduction, throughput improvement, resource efficiency, and compliance satisfaction into a normalized performance indicator. The optimization score increased from 0.55 to 0.96 over 50 workflow iterations. The curve shows rapid early improvement followed by gradual convergence, which is expected in adaptive orchestration systems where the largest gains occur after identifying recurring workflow bottlenecks. The final convergence region indicates that the orchestration policy becomes stable after repeated process observations.

5.6. Operational throughput analysis

Table 9 presents the operational throughput comparison under different workflow volumes. The proposed framework consistently achieved higher throughput across all workflow volumes. At 5000 workflows, conventional automation processed 211 tasks/min, whereas the proposed framework processed 475 tasks/min. This result demonstrates that the proposed architecture is better suited for large-scale digital process transformation where enterprise systems must process multiple concurrent workflows without proportional degradation in execution performance.

Table 9: Operational throughput evaluation.

Workflow volume	Conventional	Proposed framework
500 workflows	242	511
1000 workflows	238	504
2500 workflows	226	492
5000 workflows	211	475

5.7. Workflow stability and interruption analysis

Workflow stability was evaluated using the interruption probability is given by (16).

$$P_{\text{interrupt}} = \frac{N_{\text{failed workflows}}}{N_{\text{total workflows}}}. \quad (16)$$

The proposed framework achieved an interruption probability is expressed as (17).

$$P_{\text{interrupt}} = 0.027, \quad (17)$$

whereas conventional automation produced (18).

$$P_{\text{interrupt}} = 0.119. \quad (18)$$

This indicates that the proposed AI-driven orchestration mechanism reduced workflow interruption probability by approximately 77.31%. The reduction is mainly due to early exception detection, adaptive rerouting, and automated resource reallocation. In enterprise environments, such reduction is operationally significant because workflow interruptions often produce downstream delays, manual intervention costs, compliance risks, and service-quality degradation.

5.8. Comparative interpretation

The overall results show that the proposed framework improves enterprise automation performance across four major dimensions: efficiency, scalability, compliance, and resilience. The latency and throughput results confirm efficiency improvement. The scalability results demonstrate that adaptive cloud orchestration maintains stable operation under increasing concurrency. The compliance results confirm that governance-aware validation improves regulated workflow consistency. Finally, the interruption analysis shows that adaptive AI orchestration improves workflow resilience.

The results also show that the proposed system is especially suitable for multi-industry enterprise environments where workflow execution must satisfy both performance and governance requirements. Finance-oriented workflows benefit from faster decision routing and audit traceability. Healthcare workflows benefit from privacy-aware validation and regulated data handling. Federal and public-sector workflows benefit from accessibility-aware compliance monitoring. Cloud-driven enterprise workflows benefit from adaptive resource allocation and elastic orchestration.

However, the present evaluation also has limitations. First, compliance results are based on a controlled rule-matrix model rather than direct deployment within a live regulated enterprise. Second, RPA traces were modeled

from process-event behavior and should be validated further using industrial robotic automation logs. Third, the proposed orchestration model was evaluated under controlled experimental conditions; production deployment may introduce additional constraints such as data-access policies, human approval loops, legacy integration delays, and organization-specific compliance rules. These limitations provide important directions for future work.

6. Conclusions

This paper presented an AI-driven enterprise automation framework for scalable digital process transformation in multi-industry ecosystems. The framework integrates intelligent workflow orchestration, AI-assisted decision support, governance-aware compliance monitoring, cloud-native resource allocation, and enterprise analytics into a unified automation architecture. The proposed approach was designed to address key limitations of conventional enterprise automation systems, particularly static rule execution, weak adaptability, limited compliance awareness, and poor scalability under high workflow concurrency.

6.1. Key findings

A mathematical formulation was introduced to represent enterprise workflows, orchestration decisions, compliance satisfaction, resource efficiency, and automation confidence. The experimental evaluation demonstrated that the proposed framework provides measurable improvements over conventional rule-based automation. The mean workflow latency decreased from 12.84 s to 5.31 s, automation success increased from 81.27% to 95.74%, compliance satisfaction improved from 84.12% to 97.08%, and operational throughput increased from 246 tasks/min to 518 tasks/min.

6.2. Merits of the study

The framework also reduced workflow interruption probability from 0.119 to 0.027, indicating stronger process resilience and operational continuity. The scalability analysis confirmed that the proposed framework maintains stable resource efficiency under increasing workflow concurrency. Even at 5000 concurrent workflows, the proposed system retained a resource-efficiency score of 0.87, compared with 0.61 for traditional orchestration. The compliance evaluation further showed that embedding governance validation within the automation loop improves HIPAA-oriented privacy handling, ADA accessibility alignment, Section 508 compliance, and audit consistency. The findings confirm that AI-driven enterprise automation can serve as a practical foundation for next-generation digital transformation across finance, healthcare, oil and gas, public-sector, and cloud-enabled enterprise ecosystems. By combining adaptive workflow intelligence with compliance-aware execution and cloud-native scalability, the proposed framework improves both operational performance and governance reliability.

6.3. Future scope

Future work will focus on validating the framework using live enterprise deployment data, integrating explainable AI mechanisms for audit transparency, extending the model toward federated enterprise orchestration, and incorporating generative AI agents for autonomous workflow reasoning. Further research will also examine privacy-preserving enterprise analytics, self-healing workflow systems, and digital-twin-based enterprise automation for large-scale intelligent process transformation.

Declarations and Ethical Statements

Conflict of Interest: The author declare that there is no conflict of interest.

Funding Statement: The author declare that no specific funding was received for this research.

Artificial Intelligence usage Statement: During the preparation of this manuscript, the author utilized ChatGPT solely for language refinement and grammatical corrections. The author carefully reviewed and revised the generated content and take full responsibility for the accuracy, integrity, and originality of the final manuscript.

Availability of Data and Materials: The data and/or materials that support the findings of this study are available from the corresponding author upon reasonable request.

Publisher's Note: The publisher of this article, Krrish Scientific Publications, remains neutral with regard to jurisdictional claims in published maps and institutional affiliations.

References

- [1] Mahfouz A, Mahmoud TM, Eldin AS. A survey on behavioral biometric authentication on smartphones. *Journal of Information Security and Applications*. 2017 Oct 23;37:28–37. Available from: <https://doi.org/10.1016/j.jisa.2017.10.002>
- [2] Meng W, Wong DS, Furnell S, Zhou J. Surveying the Development of Biometric User Authentication on Mobile Phones. *IEEE Communications Surveys & Tutorials*. 2014 Dec 31;17(3):1268–1293. Available from: <https://ieeexplore.ieee.org/abstract/document/7000543>
- [3] Bours P, Mondal S. Continuous Authentication with Keystroke Dynamics. *Norwegian Information Security Laboratory NISlab*. 2015 Jan 1:41–58. Available from: <https://doi.org/10.15579/gcsr.vol12.ch3>
- [4] Mu N, Xu X, Zhang X. Finding autofocus region in low contrast surveillance images using CNN-based saliency algorithm. *Pattern Recognition Letters*. 2019 Apr 16;125:124–132. Available from: <https://doi.org/10.1016/j.patrec.2019.04.011>
- [5] Finnegan OL, White JW, Armstrong B, Adams EL, Burkart S, Beets MW, et al. The utility of behavioral biometrics in user authentication and demographic characteristic detection: A scoping review. *Systematic Reviews*. 2024 Feb 8;13(1):61. Available from: <https://doi.org/10.1186/s13643-024-02451-1>
- [6] Keselj A, Milicevic M, Zubrinic K, Car Z. The Application of Deep Learning for the Evaluation of User Interfaces *Sensors*. 2022 Nov 30;22(23):9336. Available from: <https://doi.org/10.3390/s22239336>
- [7] Kim DH, Song BC. Virtual sample-based deep metric learning using discriminant analysis. *Pattern Recognition*. 2020 Sep 10;110:107643. Available from: <https://doi.org/10.1016/j.patcog.2020.107643>
- [8] Teh PS, Teoh ABJ, Yue S. A survey of Keystroke Dynamics Biometrics. *The Scientific World JOURNAL*. 2013 Jan 1;2013(1):408280. Available from: <https://doi.org/10.1155/2013/408280>
- [9] Dillon R, De Marsico M. Behavioral biometrics for remote exam integrity: Continuous authenticity assessment via keystroke dynamics. *Procedia Computer Science*. 2025 Jan 1;274:402–411. Available from: <https://doi.org/10.1016/j.procs.2025.12.040>
- [10] Syed R, Suriadi S, Adams M, Bandara W, Leemans M, Ouyang C, et al. Robotic Process Automation: Contemporary themes and challenges. *Computers in Industry*. 2020;115:103162. Available from: <https://doi.org/10.1016/j.compind.2019.103162>
- [11] Aguirre S, Rodriguez A. Automation of a Business Process Using Robotic Process Automation (RPA): A Case Study. In: Figueroa-García JC, López-Santana ER, Villa-Ramírez JL, Ferro-Escobar R, editors. *Applied Computer Sciences in Engineering*. WEA 2017. Communications in Computer and Information Science. vol 742. Springer, Cham; 2017. p. 65–71. Available from: https://doi.org/10.1007/978-3-319-66963-2_7
- [12] Leno V, Dumas M, La Rosa M, Maggi FM. Multi-Perspective Process Model Discovery for Robotic Process Automation. In: *CEUR Workshop Proceedings*. vol 2114; 2018. p. 37–45. Available from: <https://ceur-ws.org/Vol-2114/paper5.pdf>
- [13] van der Aalst WMP, Bichler M, Heinzl A. Robotic Process Automation. *Business & Information Systems Engineering*. 2018;60(4):269–272. Available from: <https://doi.org/10.1007/s12599-018-0542-4>
- [14] Marrella A. What Automated Planning Can Do for Business Process Management. *Business Process Management Journal*. 2019;25(6):1502–1527. Available from: https://doi.org/10.1007/978-3-319-74030-0_1
- [15] Mendling J, Pentland BT, Recker J. Building a complementary agenda for business process management and digital innovation. *European Journal of Information Systems*. 2020;29(3):208–219. Available from: <https://doi.org/10.1080/0960085X.2020.1755207>
- [16] Binz T, Breiter G, Leymann F, Spatzier T. Portable Cloud Services Using TOSCA. *IEEE Internet Computing*. 2014;18(3):80–85. Available from: <https://doi.org/10.1109/MIC.2012.43>
- [17] Burns B, Grant B, Oppenheimer D, Brewer E, Wilkes J. Borg, Omega, and Kubernetes. *Communications of the ACM*. 2016;59(5):50–57. Available from: <https://dl.acm.org/doi/10.1145/2890784>
- [18] Newman S. Building Microservices. 2nd ed. *O'Reilly Media* 2021. Available from: <https://www.oreilly.com/library/view/building-microservices-2nd/9781492034018/>
- [19] van der Aalst WMP. Process Mining: data science in action. 2nd ed. *Springer* 2016. Available from: <https://doi.org/10.1007/978-3-662-49851-4>
- [20] Dumas M, La Rosa M, Mendling J, Reijers HA. Fundamentals of Business Process Management. 2nd ed. *Springer* 2018. Available from: <https://doi.org/10.1007/978-3-662-56509-4>
- [21] Weske M. Business Process Management: Concepts, Languages, Architectures. 3rd ed. *Springer* 2019. Available from: <https://doi.org/10.1007/978-3-662-59432-2>
- [22] Russell S, Norvig P. Artificial Intelligence: A Modern Approach, 4th US. Available from: <https://aima.cs.berkeley.edu/>
- [23] Goodfellow I, Bengio Y, Courville A. Deep Learning. *MIT Press* 2016. Available from: <https://www.deeplearningbook.org/>
- [24] El-Gharib NM, Amyot D. Robotic Process Automation Using Process Mining: A Systematic Literature Review. *arXiv preprint arXiv:2204.00751* 2022. Available from: <https://arxiv.org/abs/2204.00751>
- [25] White SA. Introduction to BPMN. IBM Cooperation; 2004. Available from: https://www.omg.org/bpmn/Documents/Introduction_to_BPMN.pdf
- [26] Ko RKL. A computer scientist's introductory guide to business process management. *Crossroads*. 2009;15(4):11–18. Available from: <https://doi.org/10.1145/1558897.1558901>
- [27] APaul J, Lu S, He B. Database systems on GPUs. *Foundations*

- and Trends in Databases. 2021 Jul 12;11(1):1-08. Available from: <https://doi.org/10.1561/19000000076>
- [28] Dintakurthy Y, Innmuri RK, Vanteru A, Thotakuri A. Emerging applications of artificial intelligence in Edge computing: A comprehensive review. *Journal of Modern Technology*. 2024:175-185. Available from: <https://doi.org/10.71426/jmt.v1.i2.pp175-185>
- [29] Soma AK. Hybrid RNN-GRU-LSTM model for accurate detection of DDOS attacks on IDS dataset. *Journal of Modern Technology*. 2024 May 14;2(1):283-291. Available from: <https://doi.org/10.71426/jmt.v2.i1.pp283-291>
- [30] Penaganti R. Technical Implementation Guide: Modern Payment Solutions for Captive Finance. *Journal of Computer Science and Technology Studies*. 2025 Nov 6;7(11):346-362. Available from: <https://doi.org/10.32996/jcsts.2025.7.11.34>
- [31] Saripudi K. A study on Artificial Intelligence and Cloud Computing Assistance for Enhancement of Startup Businesses. *Journal of Computing and Data Technology*. 2025 Jul 26;1(1):68-76. Available from: <https://doi.org/10.71426/jcvt.v1.i1.pp68-76>
- [32] van Dongen B. BPI Challenge 2012. *Eindhoven University of Technology*; 2012. Available from: https://data.4tu.nl/articles/_/12689204/1
- [33] Polato M. Dataset belonging to the help desk log of an Italian Company. *University of Padova*; 2017. Available from: https://data.4tu.nl/articles/_/12675977/1
- [34] Reiss C, Wilkes J, Hellerstein JL. Google cluster-usage traces: format + schema. *Google Inc., White Paper*. 2011 Nov;1(1-14):83. Available from: <https://github.com/google/cluster-data>
- [35] Reiss C, Tumanov A, Ganger GR, Katz RH, Kozuch MA. Heterogeneity and dynamicity of clouds at scale: Google trace analysis. In *Proceedings of the third ACM symposium on cloud computing* 2012 Oct 14 (pp. 1-13). Available from: <https://doi.org/10.1145/2391229.2391236>
- [36] Berti A, Van Zelst SJ, van der Aalst W. Process mining for python (PM4Py): bridging the gap between process-and data science. *arXiv preprint arXiv:1905.06169* 2019 May 15. Available from: <https://doi.org/10.48550/arXiv.1905.06169>